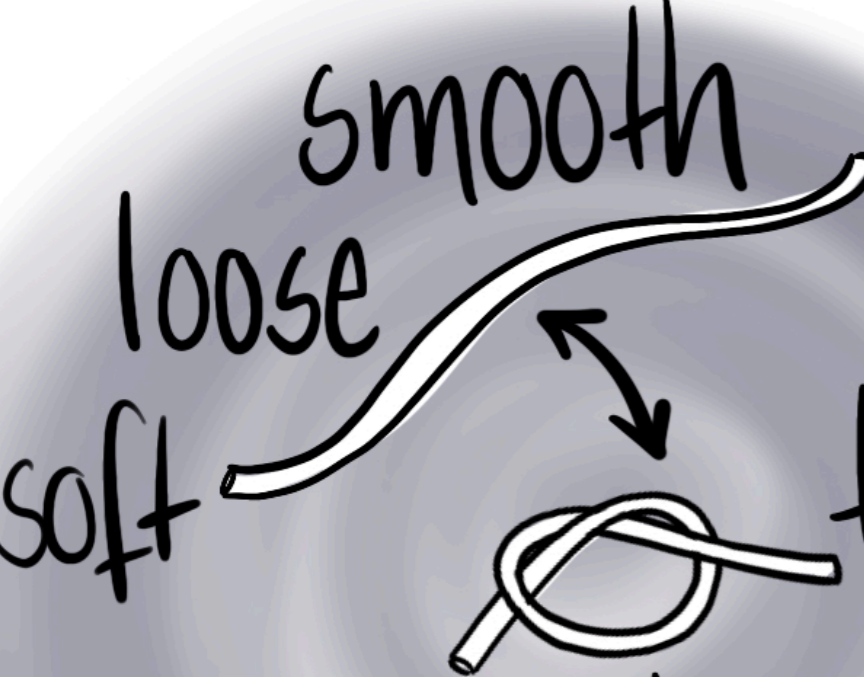


# Sensations

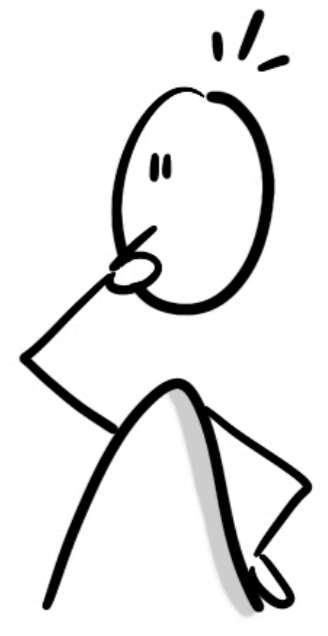

smooth  
loose  
soft  
tight  
clenched  
tense  
knotted



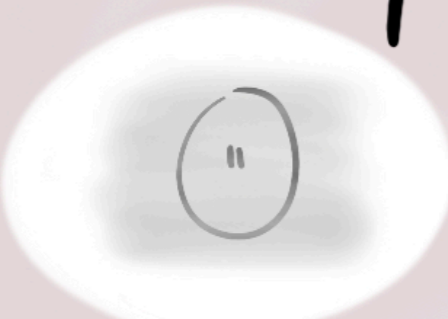
shivery  
shaky  
throbbing  
prickly  
jittery  
pounding  
itchy  
tingly



spacey  
light  
open  
airy  
bulky  
heavy  
sluggish



numb  
dull  
breathless  
empty  
foggy  
queasy  
nauseous  
dizzy  
achy



cool  
cold  
icy  
warm  
hot  
sweaty  
burning

