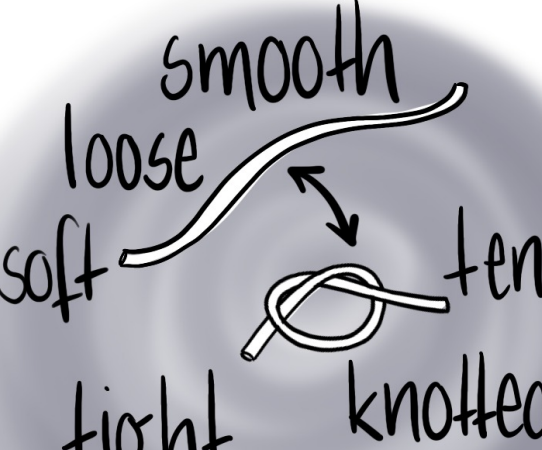



Sensations

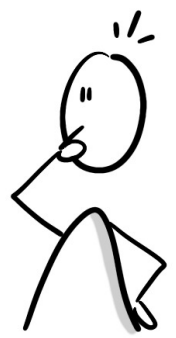

smooth
loose
soft
tight
clenched
tense
knotted



shivery
shaky
throbbing
prickly
jittery
pounding
itchy
tingly



spacey
light
airy
open
bulky
heavy
sluggish



numb
empty
foggy
dizzy
queasy
dull
nauseous
breathless
achy



cool
cold
icy
warm
hot
burning
sweaty

